



RoHS



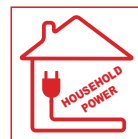
UL-WTDP, CB-TMP Lab.



CE

# PROTOPIC III-PLUS 540

Perfect & Easy Operation for  
Digital Printing On Demand Solution



Using household power  
supply (220~240V)

## Professional POD Laminator

Easy operation & moving with foldable feeding table  
& one-body framed design

- Perfect lamination without silvering (micro bubble) for all kinds of substrates
- Usage of eco-friendly GMP Thermalami® film
- Equipped automatic feeding gap adjustable device
- Equipped automatic burst cutting system
- Applied foldable feeding table & slide drawer type paper stacking table
- Equipped rotating decurling bar to avoid scratch on the prints
- Adjustable roller pressure for effective & high quality lamination
- Ergonomic designed touch screen for easy control and high productivity



### Patents for PROTOPIC III-PLUS 540

- How to make embossing pattern
- Roll film lamination
- Embossing effect by embossing roller
- Angle-adjustable rotating decurler

POD LAMINATORS

PROTOPIC III-PLUS 540

# PROTOPIC III-PLUS 540



www.gmp.com

## POD LAMINATOR

### Features

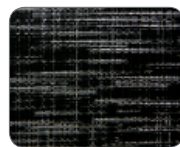
- Automatic feeding gap adjustable system
- Lower-noise air compressor inside the cabinet
- Strong lamination pressure for the best quality lamination
- User-friendly ergonomic designed touch screen
- Cantilever type film shaft for easy film loading & replacement
- Exchangeable commonized PCB



### Application

- Posters, pop-signs, menus
- Bookcovers
- Photographs, photo albums
- Business cards
- Gift certificates
- Labels
- Greeting cards

#### Basic patterns of embossing roller (option)



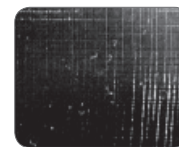
Fine Texture



Leather Texture



Sparkler Texture



Silky Texture



Linen Texture

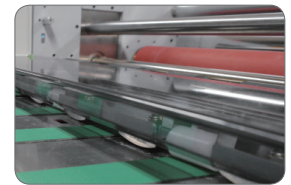
### Specifications

Model Name	PROTOPIC III-PLUS 540	
Dimension (W*L*H, mm)	800*2240*1350mm	
Laminating speed	1.5m/min ~ 10m/min	
Paper size (W*L, mm)	Max.	540*800mm
Laminating films	• Single Side: – POLYNEX (20~43mic) – PERFEX (25mic) – NYLONEX (27~44mic) • MICRONEX (6~10mic) : Gloss, Matt, Hologram	
Sleeking	Gloss, Matt, Hologram, Metallic	
Substrate thickness	120~350g/m <sup>2</sup>	
Front roller diameter	Top	high glossy chrome ø100
	Bottom	silicon ø80
Rear roller diameter	silicon ø55	
Power requirement	AC 220~240V, 50/60Hz, 12A	
Power consumption	3.45kw	
Warm-up time	7 min.	
Heating system	INFRARED HEATER	
Laminating temp.	MAX.150°C	
Temp. control	Capacitive touch screen	
Speed control	Capacitive touch screen	
Display system	LCD Panel	
Roller pressure	Pneumatic cylinder	
Film core size	77mm (3" )	
Air compressor	1 HP, 89L/min	
Temp. sensing method	Thermo-couple inserted in the roller shell	

※ GMP reserves the right to change specifications without prior notice.



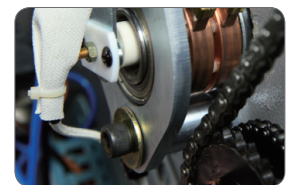
High glossy chrome roller



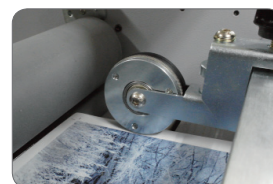
Automatic feeding gap control device



Capacitive touch screen



Thermo-couple inserted in the roller shell for temp. sensing



In-line perforator



Decurling device



Cantilever type film shaft



Air Compressor